



ST15

THE STONE DIRECTORY

2026

www.st15directory.com

BROUGHT TO YOU BY THE STONE & ECCLESHALL GAZETTE



Scan the QR code to
arrange your free
landlord check

The Renters' Rights Bill is coming!

We'll guide you through!



Because property is personal with...

BELVOIR!

belvoir.co.uk/stafford
belvoir.co.uk/stone

Stafford 01785 254441
Stone 01785 818255



Welcome to the 2026 ST15 Directory

Welcome to the 2026 edition of The ST15 Directory, a companion publication for the Stone & Eccleshall Gazette.

The ST15 postcode covers Stone, plus Hilderstone, Oulton, Moddershall, Swynnerton & Yarnfield.

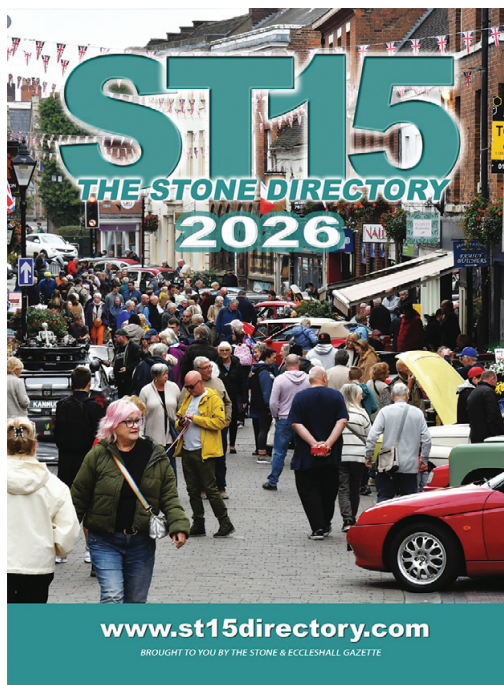
We print 10,000 copies of this directory, and deliver them to homes and businesses within the ST15 postcode area.

The directory gives you instant access to all the local telephone numbers and website addresses you'll ever need, plus it's crammed full of **local businesses and tradespeople**, very handy for when you next need a plumber, electrician, or maybe a new Kitchen perhaps?

If you ever misplace this copy, you can find an online version at www.st15directory.com

If you run a not for profit organisation that we have not listed, or if for any reason the number or website we have published is not correct, please email hello@st15directory.com and we will amend it for the 2027 edition.

Similarly, if your business hasn't been included, and you'd like it to be, email us and we'll get back to you with the advertising costs.



Tel: 07514 967890

www.st15directory.com

Published the by Stone Gazette Ltd. All Rights Reserved © ST15 Directory

Photography throughout courtesy and copyright of Martin Robinson



[@martinrobinson2](https://twitter.com/martinrobinson2)

THE STONE & ECCLESHALL Gazette

The Stone & Eccleshall Gazette is hand delivered bi-monthly to **13,400 homes** in Stone, Eccleshall and the surrounding areas.

You can also read it online by visiting www.stonegazette.com

Advertising with us could make a REAL DIFFERENCE to your business in 2026

**Call us today on 07514 967 890
or email: stonegazette@outlook.com**

Stone & Eccleshall's Favourite Monthly Read



Enjoy exploring Stone and its' many places of historic interest, boutiques, stylish places to eat, drink, exciting festivals and specialist markets.

STONE PAST AND PRESENT

Stone's existence as a small settlement with a church, situated alongside the river Trent, was recorded as early as 670AD. The church was replaced in 1135 by an Augustinian Priory due to its position on the ancient road from Chester to London and the availability of a permanent supply of clean water from Scotch Brook.

The development of Stone as a medieval market town had its origins in the presence of the Priory and the market charter, granted by Henry III in 1251. A trading community began to develop around regular markets and fairs and is reflected in the layout of the town centre which has several long and narrow 'luggage tenements' stretching back on both sides of the High Street.

The Priory was destroyed during the 'dissolution of the monasteries' but Stone continued to thrive and during the 17th and 18th centuries became an important transport centre between London and the North and Ireland with as many as 38 coaches arriving daily at several bustling inns. Its growth accelerated following the construction of the Trent and Mersey Canal during the 1770's, an event which turned the town, according to one contemporary report, into 'a busy inland sea port'.

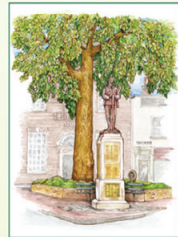
Brewing had taken place in Stone since the foundation of the Priory and now expanded with the opening of 2 local breweries, John Joule and Sons (1780) and Montgomery & Co. Boot and shoe-making also developed rapidly and by 1851 there were 16 manufacturers of footwear located in the town, supplied by tanneries situated at the south end of Crown Street.

The arrival of the railway in the 1830's provided another boost to growth and Stone became a desirable location for those wishing to escape the increasing pollution of the major conurbations.

Modern day Stone is a vibrant canal and market town with a strong community spirit and notable heritage assets. Its historic centre comprises mainly Georgian and Victorian buildings and monuments, more than 50 of which are listed by Historic England.

Stone offers the visitor an interesting range of shopping and leisure experiences, including popular festivals and events and the opportunity to explore its parks, canal and riverside walks and the Crown Meadow Nature Reserve.

★ GRANVILLE SQUARE



Granville Square had been known as Pump Square but was renamed in honour of Granville Leveson-Gower, 2nd Earl Granville, a Victorian statesman and Lord of Stonepark and features in many photographs of historic Stone. It is overlooked by a large plane tree planted in 1901 to commemorate the coronation of King Edward VII. The Square is the site of Stone's War Memorial designed by sculptor Albert Toft and unveiled in January 1921 by Lord Dartmouth, Lord Lieutenant of the County. The original plaques bear the names of the 126 Stone men who lost their lives during the WW1. Later plaques were added in memory of those lost during WW2. Behind the Square lies the 'Poste de Stone', originally the town's General Post Office.

★ THE CROWN HOTEL



The Crown Hotel stands at the centre of the High Street adjacent to Market Square and is a 3 storey Grade II* listed Georgian building dating to 1778. Earl Gower of Trentham commissioned architect Henry Holland to draw up plans for the Hotel after the original had been destroyed by fire. Originally known as the Crown Inn, the hotel was the venue for the formation of the Trent and Mersey Canal Company and an important staging post for passenger and mail coaches travelling the London-Holyhead and London-Carlisle routes.

The Hotel was once owned by John Joule & Sons and has seen visits by many notable persons and celebrities including footballers, stars of stage and screen and politicians from the U.K. and overseas.

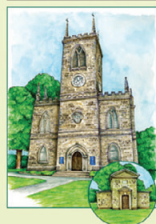
★ CUMBERLAND HOUSE



Cumberland House is situated in the (lower) High Street and is a fine example of a 3 storey Grade II listed Georgian town house with an imposing entrance surrounded by Doric half-columns. Note the 'candle snuffer' to the right of the main entrance.

It was named after Prince William, Duke of Cumberland who lodged there in 1745 when his army camped on the 'Common Plott' before moving to intercepting a Jacobite army advancing southwards towards London. Cumberland House is now home to a GP Practice.

★ ST MICHAEL & ST WULFAD CHURCH



St Michael and St Wulfad is the parish church of Stone. It is Grade II* listed and built in 1758 to replace the old Priory Church. It is a fine example of an 18th Century church in the Early Gothic Revival style with many surviving fittings and an excellent collection of Kempe glass. The church also contains the 12th century seal matrix from Stone Priory and a painting of St. Michael by portraitist Sir William Beechey. At the rear of the church is the Jervis Family Mausoleum containing the remains of the famous naval hero John Jervis, Earl of St. Vincent, victor at the battle of Cape St. Vincent. There is also a fine memorial to him surmounted by a bust by leading portrait sculptor, Sir Francis Chantrey.

★ OLD JOULE'S BREWERY WAREHOUSE



The former 'Ale Stores and Stables' situated alongside the Trent & Mersey Canal were originally constructed in 1881 for the canal company but later acquired by local brewer Joule and Sons. They illustrate the importance of canal and horse drawn transport during a period when Joules sold their beers throughout the U.K and exported to North America and Australia. The canal was used for transport to the ports of Liverpool and Hull for onward shipment.

The buildings are Grade II listed and constructed of red brick with decorative bandings in Staffordshire blue brick. There is a lintel inscribed 'John Joule & Sons, 1881' and 5 loading bays. In the upper gable of each is a roundel and red cross illustrating the use of branding during the period. The buildings are now an Engineering Works.

★ WORKHOUSE BRIDGE & CHRISTINA SCULPTURE



Workhouse Bridge (No. 94) is Grade II listed and designed by the engineer James Brindley. It was completed between 1771 and 1772.

The bridge comprises an elliptical arch with plastering and a brick parapet. It connected the Town Centre with the old Stone Workhouse which now houses private residences.

The small sculpture on the bank to the right commemorates Christina Collins who took passage in July 1839 from Preston Brook to London. The boat's crew took to drinking. She feared for her safety and reported her concerns to the Toll Office in Stone. Continuing on her journey she was raped and thrown overboard between Stone and Rugeley. Two of the crew were hanged for her murder at Stafford and a third transported to Australia.

★ OLD WALTON BRIDGE



Old Walton Bridge spans the River Trent on Stafford Street. It is a Grade II listed stone built structure dating to medieval times with elements of 17th or 18th rebuilding. It comprises 2 main arches and 3 smaller flood arches to the sides and is approximately 60m long and 5m wide.

It was superseded by a new wider road bridge in 1984 after increasing traffic flows became restricted by its width.

The bridge can be approached across the Crown Meadow Nature Reserve or along Stafford Street past Westbridge Park.

Stone Town Council
15 Station Road, Stone, Staffordshire. ST15 8JP
Tel: 01785 619740

All images ©Stone Town Council

Stone Town Centre



KEY			
P	Parking		Railway Station
P with wheelchair	Disabled Parking		Bus Stop
	Supermarket/Convenience Store		Taxi
	Place of Special Interest		Petrol
	Toilets		Canal & River Walks

2026

CALENDAR

JANUARY							FEBRUARY							MARCH						
S	M	T	W	T	F	S	S	M	T	W	T	F	S	S	M	T	W	T	F	S
				1	2	3	1	2	3	4	5	6	7	1	2	3	4	5	6	7
4	5	6	7	8	9	10	8	9	10	11	12	13	14	8	9	10	11	12	13	14
11	12	13	14	15	16	17	15	16	17	18	19	20	21	15	16	17	18	19	20	21
18	19	20	21	22	23	24	22	23	24	25	26	27	28	22	23	24	25	26	27	28
25	26	27	28	29	30	31								29	30	31				

APRIL							MAY							JUNE						
S	M	T	W	T	F	S	S	M	T	W	T	F	S	S	M	T	W	T	F	S
			1	2	3	4						1	2							
5	6	7	8	9	10	11	3	4	5	6	7	8	9	7	8	9	10	11	12	13
12	13	14	15	16	17	18	10	11	12	13	14	15	16	14	15	16	17	18	19	20
19	20	21	22	23	24	25	17	18	19	20	21	22	23	21	22	23	24	25	26	27
26	27	28	29	30			24	25	26	27	28	29	30	28	29	30				
							31													

JULY							AUGUST							SEPTEMBER						
S	M	T	W	T	F	S	S	M	T	W	T	F	S	S	M	T	W	T	F	S
			1	2	3	4							1							
5	6	7	8	9	10	11	2	3	4	5	6	7	8	6	7	8	9	10	11	12
12	13	14	15	16	17	18	9	10	11	12	13	14	15	13	14	15	16	17	18	19
19	20	21	22	23	24	25	16	17	18	19	20	21	22	20	21	22	23	24	25	26
26	27	28	29	30	31		23	24	25	26	27	28	29	27	28	29	30			
							30	31												

OCTOBER							NOVEMBER							DECEMBER						
S	M	T	W	T	F	S	S	M	T	W	T	F	S	S	M	T	W	T	F	S
			1	2	3								1							
4	5	6	7	8	9	10	8	9	10	11	12	13	14	6	7	8	9	10	11	12
11	12	13	14	15	16	17	15	16	17	18	19	20	21	13	14	15	16	17	18	19
18	19	20	21	22	23	24	22	23	24	25	26	27	28	20	21	22	23	24	25	26
25	26	27	28	29	30	31	29	30						27	28	29	30	31		

ST15

*Really Useful
Numbers*



Really useful numbers...

Emergencies, Helplines & Family Health

Abbey House Dentists	01785 818037
	www.abbeyhousedental.com
Age Concern (Stone & District)	01785 817906
	https://age-concern-stone.chessck.co.uk/
Alcoholics Anonymous.....	0800 9177 650
	www.alcoholics-anonymous.org.uk
Birchall & Watson Chemists	01785 812597
Birchall & Watson, Walton Pharmacy	01785 812059
Boots the Chemist	01785 813277
	www.boots.com
Cancer Research Stone Shop.....	01785 811070
	www.cancerresearchuk.org
Cannock Chase Hospital.....	01543 572757
	www.royalwolverhamptonhospitals.nhs.uk
County Hospital (Stafford).....	01785 257731
	www.uhnm.nhs.uk
CRIMESTOPPERS	0800 555 111
	www.crimestoppers-uk.org
Cumberland House Surgery	01785 813538
	www.cumberlandhouse.org.uk
Douglas Macmillan Hospice	01782 344300
	www.dmhospice.org.uk
Electricity (Emergency)	0800 40 40 90
	www2.nationalgrid.com
Fillybrook House Family Dental Practice	01785 812412
	www.fillybrookhouse.co.uk
Gas (Emergency)	0800 111 999
	www2.nationalgrid.com
Harrison Denture Clinic	01785 811812
	www.hdcl.biz
Katharine House Hospice	01785 254645
	www.khhospice.org.uk
Macmillan Cancer Support	01785 816892
	www.macmillan.org.uk

**Are you a
Useful Number
not listed here?**

**Then let us know
for the next edition**

email your details to

hello@st15directory.com





Stone Recycling Centre

Beacon Rd / Opal Way
Stone Business Park, Aston ST15 0NN

Tel: 0300 111 8000

Email: recycling@staffordshire.gov.uk

WINTER OPENING HOURS (GMT)
26/10/2025 until 28/03/2026
Monday and Tuesday - Closed
Wed, Thursday & Friday 9am - 5pm
Saturday and Sunday 9am - 5pm

SUMMER OPENING HOURS (BST)
29/03/2026 to 30/10/2026
Monday and Tuesday - Closed
Wed, Thursday & Friday 9am - 6pm
Saturday and Sunday 9am - 5pm

www.staffordshire.gov.uk/environment

- Malcolm Gray Opticians**01785 851015**
www.mganda.co.uk
- Mansion House Surgery**01785 815555**
www.mansionhousesurgery.nhs.uk
- Peter Bowers Opticians.....**01785 813902**
www.peterbowers.co.uk
- Police, Fire, Ambulance****999**
- Regency House Dental Practice**01785 815818**
www.regencydental.co.uk
- Royal Stoke University Hospital**01782 715444**
www.uhnm.nhs.uk
- Samaritans Stafford**01785 243333**
www.samaritans.org
- Severn Trent Water (Emergency)****0800 783 4444**
www.stwater.co.uk
- Stafford & District Access Group **01785 605187**
www.sdag.org.uk
- STING (MS Support)**07847 872635**
www.sting.org.uk
- Stone & District Stroke Club Jan Alexander **07790 078627**
- Stone Alzheimers's Drop in Centre **01785 603707**
- Stone Community Hub.....**01785 812417**
www.stonecommunityhub.org
- Stone Dental Care**01785 818284**
- Stone Osteopaths**01785 816481**
www.stoneosteopaths.co.uk
- Stone Physio**01785 819414**
www.stonephysio.co.uk
- Stone Friends of Cancer Research UK**01785 814473**
- Stone Lions Mobility Service**07929 010 152**
- Stone Pharmacy **01785 819999**
- Stone Police** **0300 123 4455**
- The Green Community Bus.....**01785 814573**
- Trentside Clinic**01785 811471**

Funeral Directors

- Isobel Whittaker - *Independent Funeral Services*.....**01785 336722**
www.iwfuneral.co.uk
- Price & Stubbs **01785 812556**
www.thefuneraldirectors.co.uk
- Stone Co-operative Funeralcare.....**01785 813375**
www.co-operativefuneralcare.co.uk

Stafford Crematorium

The Cemeteries and Crematorium are open to the public on the following days:

October to March
Monday to Saturday - 9.00am to 4.30pm
Sunday and Bank Holidays - 10.00am to 4.30pm

April to September
Monday to Saturday - 9.00am to 8.00pm
Sunday and Bank Holidays - 10.00am to 8.00pm

For out of hours booking (for cremations and burials) or security of the site please call**07970 532687**
www.staffordbc.gov.uk/bereavement

Miscellaneous numbers

- CAB - Staffs South West Citizens Advice Bureau..... **03444 111 444**
www.staffswcab.org.uk
- MP Sir Gavin Williamson CBE **01902 846616**
www.gavinwilliamson.org
- Oak Tree Farm Project **01889 505653**
www.oaktreefarm.uk.net
- Registrar of Births, Deaths and Marriages **0300 1118001**
www.staffordshire.gov.uk
- Stafford Borough Council **01785 619000**
www.staffordbc.gov.uk
- Stone Library **0300 111 8000**
www.staffordshire.gov.uk
- Stone Recycling Centre **0300 111 8000**
www.recycling@staffordshire.gov.uk
- Stone Town Council **01785 619740**
www.stonetowncouncil.gov.uk
- Staffordshire Past Track **01889 881388**
www.staffspasttrack.org.uk
- Staffordshire Venture **07891508584**
www.staffordshireventure.org
- The Stone & Eccleshall Gazette Magazine..... **07514 967890**
www.stonegazette.com

Schools

- Alleyne's Academy **01785 354200**
www.alleynesacademy.co.uk
- Christ Church Academy..... **01785 334900**
www.christchurchacademy.co.uk
- Christ Church C.E. First School **01785 336545**
www.christchurch-stone.staffs.sch.uk
- Conexus Tuition **07826 968703**
www.conexustuition.co.uk
- Manor Hill First School **01785 812418**
www.manorhillfirst.co.uk
- Oulton CE (VC) First School **01785 354100**
www.oultion.staffs.sch.uk
- Springfields First School..... **01785 337310**
www.springfieldsfirstschool.org.uk
- Pirehill First School **01785 334970**
www.pirehill.staffs.sch.uk
- St. Dominic's Priory School **01785 814181**
www.stdominicspriory.co.uk
- St. Dominic's RC (A) Primary School **01785 354070**
www.st-dominics-catholic.staffs.sch.uk
- St. Michael's CE First School **01785 334930**
www.stmichaelsstone.org.uk
- Tittensor C.E. (VC) First School..... **01782 372539**
www.tittensor.staffs.sch.uk
- Walton Priory Middle School **01785 550040**
www.waltonpriory.staffs.sch.uk



Pre-schools, Playgroups & Activities



Aston Playgroup07870 443452

Aston by Stone Toddler Group01785 812862

Balance & Beam01782 214452

www.balanceandbeam.co.uk

Chuckle Productions07837 741510

www.chuckleproductions.org

Christ Church Parent & Toddler Group01785 286093

Come into Play01785 286882

www.comeintoplay.co.uk

Create & Play Toddler Group (At the Crossing Community Centre)

find us on Facebook: Create & Play - Stone

Elmhurst House Day Nursery.....07837 006 006

www.elmhursthousedaynursery.co.uk

Flip Out Trampoline Centre.....0845 450 9553

www.flipout.co.uk

Kids Planet01785 813528

www.kidsplanetdaynurseries.co.uk

Gust Swim School01785 817534

www.swimteaching.co.uk

Little Stars Child Care07907 695356

www.littlestarschildcare.org.uk

Manor Hill First School Nursery.....01785 812418

www.manorhillfirst.co.uk

Meaford Day Nursery01785 812578

www.meaforddaynursery.com

Meaford Fields Day Nursery01785 814788

www.meafordfields.co.uk

Mumbles01889 508123

www.mumblesdaynursery.co.uk

Oulton Little Bears Playgroup07708 733806

www.netmums.com/local/l/little-bears-playgroup-cic

Poppets Day Nursery01785 812420

Smarty's01785 817974

www.smartysdaynursery.com

St. Dominics Pre-School01785 814181

www.stdominicspriory.co.uk

Swynnerton & District Pre School Playgroup.....01782 796214

Clubs & Organisations

- Air Training Corps - Stone.....**01785 257804**
www.stoneaircadets.co.uk
- Best Kept Village Competition**01785 242525**
www.staffs.org.uk
- Girlguiding, Stone & Eccleshall Division
www.girlguidingstaffordshire.org.uk
- Girlguiding, Stone Outward Division
www.stoneoutwarddivision.co.uk
- Stone & District Scouting
 Local Groups in Stone District see..... www.stone-scouts.org.uk
 Kibblestone Adventure Centre – a scout campsite in Oulton.
 Clive Leader **07714 693364**
www.kibblestone.org
- Guide Dogs for the Blind**01785 813473**
www.guidedogs.org.uk
- Inner Wheel Club of Stone**01785 812438**
- Rotary Club of Stone & District**01785 760120**
www.stonerotary.org
- Royal Air Force Association - Stone**01889 505094**
www.rafa.org.uk
- Royal British Legion - Stone Branch**01785 605132**
01782 796426
www.britishlegion.org.uk
- Royal British Legion - Womens Section**01785 812572**
www.rblws.org.uk
- Soroptomists**01785 814376**
- St. John Ambulance**07737 7525538**
www.sja.org.uk
- Stafford & Stone Young Enterprise.....**07960 055 448**
www.young-enterprise.org.uk
- Staffordshire ACF Stone Detachment**01785 257804**
www.armycadets.com
- Staffordshire Wildlife Trust - Stone District**01785 815136**
www.wildlifetrusts.org
- Stone Bell Ringers (St Michaels)..... Peter Burgess **07921 944841**
- Stone Bridge Club.....**01782 396869**
www.bridgewebs.com/stone
- Stone Carnival www.stonecarnival.org
info@stonecarnival.org
- Stone Central Good Companions **01785 815104**
- Stone Common Plot Trustees**01785 814568**
- Stone Community Hub.....**01785 812417**
www.stonecommunityhub.org
- Stone Food & Drink Festival**01785 526007**
www.stonefooddrink.org.uk





- Stone Historical & Civic Society**01785 817980**
www.staffordshireheritage.org.uk
- Stone in Bloom**07736 413097**
www.stoneinbloom.com
- Stone Lions**0845 833 8478**
www.e-clubhouse.org/sites/stonelionsuk
- Stone Lions Mobility Service.....**07929 010 152**
- Stone & District Probus Club**01785 613966**
www.probus.org.uk
- Stone Ramblers.....**www.stoneramblers.org.uk**
- Stone Round Table**01782 372372**
www.roundtable.co.uk
- Stone Trefoil Guild**01785 819752**
- Stone and District u3a (*University of the Third Age*)
secretary@stoneu3a.net
www.stoneu3a.btck.co.uk
- Stone WI (Aston by Stone).....**01785 615662**
www.sfwi.org
- Stone Young Farmers**01889 270835**
www.staffsyoungfarmers.org.uk
- Stone Youth Cafe**01785 812417**
- Talking Newspapers Stafford & Stone**01785 813683**
staffordandstonetn.org.uk
- The Womens Institute (Oulton).....**01785 813222**
- Towns Womens Guild Stone Central**01785 812561**
www.the-tg.com
- Walton Good Companions **01785 815882**
www.waltoncommunity.org

Sport & Leisure

- Alleyne's Sports Centre **01785 815715**
<https://activeukleisure.com/alleynes-sports-centre>
- Barlaston Golf Club**01782 372867**
www.barlastongolfclub.co.uk
- Crown Wharf Theatre **info@crownewharftheatre.org.uk**
www.crownewharftheatre.org.uk
- Flip Out Trampoline Centre.....**0845 450 9553**
www.flipout.co.uk
- Groove Academy**01785 413230**
www.grooveacademy.co.uk
- Inner Wheel Club of Stone **01785 814444**
- Innringers Handbells**01782 392621**
www.theinringers.co.uk
- Little Stoke Cricket Club **01785 812558**
www.littlestoke.play-cricket.com
- Oulton Folk Dance club**01785 813412**
- Oulton Watercolour Society**01782 857548**
[www.facebook.com.Oulton-Watercolour](http://www.facebook.com/Oulton-Watercolour)
- Oulton Yoga Club **01782 372324**
- Rooftop Studios.....**01785 761233**
www.rooftopstudios.co.uk
- Stafford and Stone Canoe Club**01785 812729**
staffordandstonecc.co.uk
- Stone Acro **07971 862594**
- Stone Badminton Club**stonebadclub1@gmail.com**
www.facebook.com/StoneBadmintonClub
www.stoneclub.leaguerepublic.com
- Stone Choral Society**01785 812921**
www.stonechoral.org.uk
- Stone Chrysanthemum & Dahlia Society **01785 812097**
- Stone Cricket Club**01785 813068**
www.stone.play-cricket.com
- Stone Crown Bowling Club**07706 814906**
www.stonecrownbc.co.uk

- Stone Fencing Club **01782 595910**
www.stonefencingclub.co.uk
- Stone Flower Club **01785 255617**
- Stone Garden Club **01785 812097**
- Stone Golf Centre **01785 760868**
www.stonegolfcentre.co.uk
- Stone Golf Club **01785 747030**
www.stonegolfclub.co.uk
- Stone Hockey Club **01785 814409**
www.stonehockeyclub.co.uk
- Stone Lawn Tennis and Squash Club **01785 815429**
www.sltc.org.uk
- Stone Male Voice Choir **01782 394655**
- Stone Master Marathoners **01785 818734**
www.stonemm.co.uk
- Stone Recorded Music Society **01785 817402**
- Stone Revellers Musical Theatre **07917 192988**
www.stonerevellers.org.uk
- Stone Rugby Club..... **07831 460438**
www.pitchero.com/clubs/stonerufc
- Stone Table Tennis Association **01782 621678**
- Stone Tennis & Squash Club **01785 815429**
www.sltc.org.uk
- Stone Town Band **07768 781159**
www.stonetownband.org.uk
- Stone Watercolour Class **01785 615240**
- Stone & District Begonia Society **01785 812300**
- Stone & District Swimming Club **01785 816783**
www.sadsc.co.uk
- Stone Wheelers Cycling Club **01785 615250**
www.stone-wheelers.co.uk
- Swynnerton Park Cricket Club **01782 796382**
- The Ishta Centre **01785 616010**
www.ishtacentre.co.uk
- Walton Youth Club **01785 354108**
www.youthbox.info
- Westbridge Park Fitness Centre **01785 619600**
www.freedom-leisure.co.uk

Music Venues

- Crown Wharf..... **01785 550450**
www.joulesbrewery.co.uk
- Granvilles **01785 816658**
www.granvilles.st
- Swan Inn **01785 815570**
www.swaninnstone.co.uk
- The Crown & Anchor..... **01785 814343**
www.crownandanchorstone.com
- The Red Lion Inn **01785 286991**
www.redlionstone.pub





Churches

- All Saints Church, Moddershall **01785 812669**
www.christchurchstone.org
- Christ Church (C of E) **01785 811990**
www.christchurchstone.org
- Church at The Crossing (formerly Stone Baptist).. **01785 785066**
www.risingbrook.org/thecrossing
- Jehovah's Witnesses Stone Congregation **01785 286031**
- Religious Society of Friends (The Quakers) **01785 814129**
www.staffsquakers.org/Stone.htm
- St. John's Methodist & United Reformed Church **01785 814813**
www.stjohnschurchstone.org.uk
- St John The Evangelist Church **01785 812669**
www.christchurchstone.org
- Holy Michael Archangel **01785 813951**
www.stdominicstone.org.uk
- Our Lady of the Assumption **01782 796677**
- St Mary's Swynnerton **01782 796564**
- St Marys Abbey, Oulton **01785 812049**
- St. Michael & St. Wulfad's Parish Church **01785 812747**
www.stmichaelschurchstone.co.uk
- St. Saviours **01785 812747**
www.achurchnearyou.com/church/4519/
- The Immaculate Conception & St. Dominic's **01785 813951**
www.stdominicstone.org.uk

Community Rooms

- Christchurch Centre **01785 811990**
Christchurch.centre1@btinternet.com
- St. Dominic's Social Centre **07917 824625**
- St. Michael's Community Hall **01785 814134**
www.stmichaelshall.co.uk
- Stone Heritage Centre **01785 594767**
www.stonetowncouncil.gov.uk
- Stone Station Community Centre **01785 619740**
www.stonetowncouncil.gov.uk
- The Crossing Community Centre **01785 785066**
www.risingbrook.org/thecrossing
- The Frank Jordan Centre **01785 619740**
www.stonetowncouncil.gov.uk
- Walton Community Centre **01785 811653**
www.waltoncommunity.org

Village Halls

- Aston by Stone Village Hall..... astonbystonevillagehall@gmail.com
- Fulford Village Hall..... **01782 388784**
www.fulfordvillagehall.org.uk
- Hilderstone Village Hall **07810 332559**
www.hilderstone.org.uk/villagehall.php
- Moddershall Village Hall..... **01785 811123**
www.stoneruralparishcouncil.btck.co.uk/VillageHall
- Oulton Village Hall **01785 816017**
www.oulttonstone.org.uk
- Swynnerton Village Hall **01782 796652**
www.swynnerton.org.uk
- Yarnfield Village Hall **01785 760437**
www.yarnfieldvillagehall.co.uk

Eating Out

Aston Marina	01785 819702
	www.astonmarina.co.uk
BEAR.....	01785 819 053
	www.bemorebear.co/stone
Blame Frida.....	0333 335 6852
Blanc NRI	01782 372 866
	www.blancnri.co.uk
BOD Stone.....	01785 817946
Cavalli.....	01785 816161
	www.cavallistone.co.uk
Crown of India.....	01785 814911
Granvilles	01785 816658
	www.granvilles.st
Heaven Bar & Grill.....	01785 847097
	www.heavenbarandgrill.com
Little Seeds	01785 818925
	www.littleseedsstone.co.uk
Moddershall Oaks	01782 399000
	www.moddershalloaks.com
Ovilash	01785 813137
	www.theovilash.com
Pasta di Piazza	01785 813214
	www.pastadipiazzaitaliana.co.uk
Poste of Stone	01785 827920
The Red Lion.....	01785 286991
	www.redlionstone.pub/index
Smoke & Rye	01785 501254
	www.smokeandrye.net
Spot Gate Inn	01889 505277
	www.spotgateinn.co.uk
Stonehouse Hotel	01785 815531
	www.bespokehotels.com/stonehousehotel
Ten Green Bottles.....	01785 594616
	www.thetengreenbottles.com
The Artisan Boutique & Kitchen	01785 815948
	www.theartisanboutique.co.uk
The Butchers Block.....	01785 413409
	www.the-butchers-block.co.uk
The Crown & Anchor	01785 814343
	www.crownandanchorstone.co.uk
The Crown Hotel	01785 747477
	www.crownhotelstone.com
The Dog and Doublet Inn	01889 508331
	www.doganddoubletsandon.co.uk
The Fitzherbert Arms.....	01782 796782
	www.fitzherbertarms.co.uk
The Green Man.....	01889 505310
	www.greenmanmilwich.com
The Greyhound Inn.....	01889 508263
	www.greyhoundinn.info
The George & Dragon	01785 748787
	www.georgeanddragonmeaford.co.uk
The Mill Restaurant and Hotel	01785 818456
	www.themillrestaurante.org.uk
The Secret Tea Room.....	01785 747110
	www.facebook.com/secrettearoomstone
The Star Inn	01785 813096
	www.starpub.co.uk
The Three Crowns	01785 819516
	www.vintageinn.co.uk/thethreecrownsstone
The Wayfarer	01785 811023
	www.thewayfarerstone.co.uk



Takeaways

Blanc NRI	01782 372 866
Cavalli.....	01785 816161
Clover Cafe.....	01785 747950
Crown of India	01785 814911
Domino's Pizza.....	01785 812222
Dragon Palace	01785 819088
Flames.....	01785 816600
Flaming Wok.....	01785 815280
Glorious	01785 811911
Maru Bento.....	07472 080315
Millies	01785 811063
Oatcakes & Milkshakes.....	01785 818807
Old Road Fish & Chip Shop	01785 815030
Ovilash Takeaway	01785 813137
Piccolos Pizza	01785 819555
Priory Fish Bar	01785 819992
Proven Pizzeria.....	01785 817007
Red Rooster	01785 747050
Stonefield Fish Bar	01785 815030
Stone Kebab House	01785 812499
Subway Stone	01785 812977
Sunnyhill Chinese Takeaway	01785 286755
The Roll in Stone	07883 180072
Valleys Fast Food	01785 812929
Walton Fish Bar	01785 811553

Taxi services

A Cabs.....	01785 556 614
Secure cabs.....	01785 812 805
Smartcars.....	01785 247 247
Star Private Hire.....	01785 822 822

Places to stay

Stonehouse Hotel & Restaurant	01785 815531 www.bespokehotels.com/stonehousehotel
The Crown Hotel	01785 747477 www.crownhotelstone.com
The Mill Restaurant and Hotel	01785 818456 www.themillrestaurante.org.uk

The Small Print ...

The information contained in this directory is for general information purposes only. The information is provided by The Stone Gazette Ltd, and while we have endeavored to ensure the information is correct, we make no representations or warranties of any kind, express or implied, about the completeness, accuracy, reliability, suitability or availability with respect to the directory or the information, products, services, or related graphics contained in the directory for any purpose.

Any reliance you place on such information is therefore strictly at your own risk. In no event will we be liable for any loss or damage including without limitation, indirect or consequential loss or damage, or any loss or damage whatsoever arising from loss of data or profits arising out of, or in connection with, the use of this directory and its website.

If telephone numbers or any other details have subsequently changed or are incorrect, please email hello@st15directory.co.uk or let us know in writing to the Stone Gazette Ltd, 23 Horton Drive, Stafford ST16 1FB and we will make the amendments in the next edition.





Stone

Town Council



Stone Town Council is the local council representing the urban area of Stone. It comprises eighteen elected Councillors, five representing St Michael's Ward, five representing Stonefield and Christchurch Ward, five representing Walton South Ward and three representing Walton North Ward.

Council and committee meetings are held in the Council Chamber at 15 Station Road, Stone, normally on the first and third Tuesdays of each month. Details of all meetings are posted outside the Council offices and on the notice board in the High Street. Members of the public are welcome to attend meetings and, with prior notice to the Town Clerk, address the Council on issues related to Council business.

Stone Town Council provides services for the people and town of Stone. These services include the provision of community facilities, such as the Frank Jordan and Stone Station community centres, allotment sites at Newcastle Road and Mount Road and the Crown Meadow Nature Reserve and amphitheatre.

The Frank Jordan Community Centre has been internally renovated, and offers modern meeting/party facilities with a fully equipped kitchen and private parking, all protected by CCTV. The Stone Station Community Centre is based in the former Stone Station building and also offers a high standard of accommodation for meetings, events or parties in one of Stone's most iconic buildings.

In December 2024 the Council opened the new Heritage Centre, which forms part of the exciting redevelopment of Crown Wharf.

Investing in and working to promote a vibrant town and encourage visitors is a key Town Council priority. In order to support this, the Council organises regular events such as the Town Market, and the monthly Craft Market, together with town centre events such as the Music Festival, the Classic Car Event and the St. George's

Day celebration. Christmas lights are provided in the High Street and at Walton, with the Council's annual switch-on event being one of the highlights of the year. The High Street environment is enhanced by the Council's provision of hanging baskets and bunting along the High Street, and newly refurbished noticeboards and fingerposts throughout the town.

The Council provides bus shelters, benches, litter bins and dog bins throughout the area and takes responsibility for the upkeep of many local amenities and planted areas. It also provides grants and other support to help charitable and community organisations such as the Stone Community Hub, supports various festivals, and Council staff supply daily support and advice to local residents.

By considering the impact of every planning application, the Council seeks to develop and conserve the town, and the approval of its Neighbourhood Plan in May 2021 will help the Council to shape and protect the future of Stone for years to come.

The Town Council's market operates on Tuesdays, Fridays and Saturdays with its Craft and Collectables market on the third Saturday of each month. In addition, Stafford Borough Council operate a thriving Farmers' Market in the town on the first Saturday of each month alongside the Town Council market.

For enquiries related to the Town Council's markets, or for bookings at the Frank Jordan Community Centre or Stone Station Community Centre, please contact the Council office, on 01785 619740 or email bookings@stonetowncouncil.gov.uk

Pictured here are the current eighteen Town Councillors. Up to date details can be found on the Council's website at

www.stonetowncouncil.gov.uk

STONEFIELD AND CHRISTCHURCH WARD



Andrew Best

M: 07852 777531
andrew.best@
stonetowncouncil.gov.uk



Tom Kelt

M: 07855 051144
tom.kelt@
stonetowncouncil.gov.uk



Philip Leason

T: 01785 817980
philip.leason@
stonetowncouncil.gov.uk



Rob Kenney

T: 07980 591719
robert.kenney@
stonetowncouncil.gov.uk



Ian Fordham

T: 07801 575625
ian.fordham@
stonetowncouncil.gov.uk

WALTON SOUTH WARD & WALTON NORTH WARD



James Batrick

M: 07515 665589
james.batrick@stonetowncouncil.gov.uk



Angie Burgess

M: 07702 831 684
angie.burgess@stonetowncouncil.gov.uk



Jill Hood

M: 07736 413097
jill.hood@stonetowncouncil.gov.uk



Amber Mottershead

M: 07845 160597
amber.mottershead@stonetowncouncil.gov.uk



Nancy Powell

M: 07725 023196
nancy.powell@stonetowncouncil.gov.uk



Kerry Dawson

M: 07442 264552
kerry.dawson@stonetowncouncil.gov.uk



Jonathan Powell

M: 07966 382 931
jonathan.powell@stonetowncouncil.gov.uk



Jason Metters

M: 07597 501320
jason.mettters@stonetowncouncil.gov.uk

ST MICHAELS WARD



Lin Davies

T: 01889 505094
lin.davies@stonetowncouncil.gov.uk



Robert Townsend

T: 07783 383572
robert.townsend@stonetowncouncil.gov.uk



Bev Kenney

bev.kenney@stonetowncouncil.gov.uk



Clive Thornicroft

M: 07808 815204
clive.thornicroft@stonetowncouncil.gov.uk



Jim Davies

T: 01889 505094
Work: 01889 505011
jim.davies@stonetowncouncil.gov.uk

Stone Town Council

15 Station Road, Stone, ST15 8JP

Tel: 01785 619740

Fax: 01785 619741

clerk@stonetowncouncil.gov.uk

www.stonetowncouncil.gov.uk

Stone Urban

Councillor
Jill Hood

Party: Independent

Division: Stafford
- Stone Urban

Parish: Stone Town



Stone Rural

Councillor
Sean Bagguley

Party: Reform UK

Division: Stafford - Stone
Rural North

Parish: Barlaston ; Fulford ;
Hilderstone ; Milwich with
Fradswell ; Sandon and
Burston ; Stone Rural



Mobile: 07736 413097
email: jill.hood@staffordshire.gov.uk

Mobile: 07970 088342
Email: sean.bagguley@staffordshire.gov.uk



Swynnerton and Oulton

Councillor James A Nixon
c/o Civic Centre, Riverside,
Stafford ST16 3AQ

T: 07855 295 917
jnixon@staffordbc.gov.uk



Councillor Roy James
Hawthorns, Moss Lane
Yarnfield ST15 0PW

T: 01785 760880
rjames@staffordbc.gov.uk



Councillor Frances Beatty
MBE, JP, ARAGs

T: 01785 240667
M: 07877 896 466
fbeaty@staffordbc.gov.uk



Milwich

Councillor Karine Aspin
Stafford Borough Council,
Civic Centre, Riverside,
Stafford ST16 3AQ

T: 07498 325 374
kaspin@staffordbc.gov.uk



Barlaston

Councillor
Gareth E Jones
Whistlers,
6 Tittensor Road,
Barlaston,
Stoke on Trent
ST12 9DN

T: 01782 372349
ejones@staffordbc.gov.uk

Your councillor is the person elected every 4 years to represent your area. They can help if you are dissatisfied with a council service by advising or directing you to someone who can help sort out your problem and can sometimes progress the case on your behalf.

This is often done in advice surgeries where you can meet with the councillor for your ward and discuss your problem.

As community leaders they put forward proposals to improve their ward, which may include bringing together different community groups to develop a case for change.



Parish Clerks for the Parishes of Hilderstone, Milwich with Fradswell, Sandon and Burston, Stone Town Council, Stone Rural, Swynnerton, Yarnfield & Cold Meece



Hilderstone

Nikola Evans - Clerk for Hilderstone Parish Council

45 Thorn Close, Brereton, Rugeley, Staffs WS15 1TA

Tel: 07971 226170 Email: clerk@hilderstone.staffslc.gov.uk

Website: <https://hilderstone.org.uk>

Milwich with Fradswell,

Caroline Burnitt (Clerk)

E-mail: clerk@milwichfradswellparishcouncil.gov.uk
www.milwichfradswellparishcouncil.gov.uk



Sandon and Burston

Ginny Gibson

Email: clerk@sandonburston.staffslc.gov.uk

Phone: 01889 566393

www.sandonandburstonpc.org.uk

Stone Town Council

Mr L Trigg Town Clerk,
Stone Town Council
15 Station Road,
Stone ST15 8JP
01785 619740

clerk@stonetowncouncil.gov.uk



Stone Rural

Lucy Davies

Clerk to Stone Rural Parish Council
01785 811123 / 07811 375623
stoneruralparishcouncil@yahoo.com

Swynnerton

Lucy Davies (Clerk)
07811 375623

clerk@swynnertonparishcouncil.org.uk



Yarnfield & Cold Meece Parish Council

John Fraser - Parish Clerk
07786 948104

clerk@yarnfieldandcoldmeece-pc.gov.uk
<https://yarnfieldandcoldmeece-pc.gov.uk>

How to become a Local Councillor

A parish council is the tier of local authority closest to its community as it elects representatives from within that community. Parish councils are democracy on your doorstep. Anyone can stand as a candidate provided they meet the qualification requirements or you can find out more by contacting the local borough electoral services department.

You should be:

- Aged over 18.
- A British, Commonwealth citizen, or Euro-national citizen (who is a registered elector)
- Resident for 12 months prior to the day of election, either in the parish or within 3 miles of the boundary.
- Occupied land or premises for 12 months as owner or tenant – either in the parish or within 3 miles of the boundary
- Had a principal place of work – either in the parish or within 3 miles of the boundary.

You cannot become a councillor if:

- You hold a paid office with the council.
- If you are subject to a bankruptcy restrictions order or an interim order creates disqualification which dates from the judgement or execution and generally ends one year after the relevant order is made.
- If you have within five years before the election or since election been convicted in the United Kingdom, the Channel Islands or the Isle of Man of any offence and been sentenced to not less than three months imprisonment (whether suspended or not) without the option of a fine.
- Imprisonment probably includes any type of custodial sentence.
- This disqualification begins when the ordinary period for making an appeal is finally dismissed or abandoned or fails for want of prosecution.

You can get further information from the Staffordshire Parish Councils' Association website at

<https://spcaonline.org.uk>

Community Centre - Frank Jordan Lichfield Street, Stone, ST15 8NA



St. Michael's Suite



Stonefield Room



St. Michael's kitchen



Walton Suite

3 rooms available to hire
Suitable for parties,
meetings, playgroups,
fitness classes, etc
Competitive rates
Foyer area

Modern kitchen and toilet
facilities (incl. disabled toilets)
Tables and chairs available
Free on-site parking (incl.
disabled spaces)
Free Wi-Fi



For more information -
Call 01785 619740
Email bookings@stonetowncouncil.gov.uk
Scan the QR code



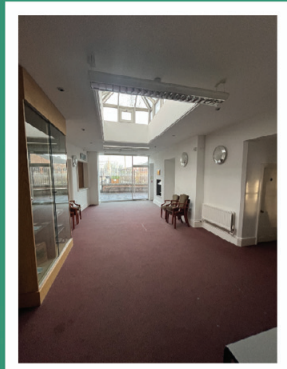
Community Centre - Railway Station Station Approach, Stone, ST15 8ER



Foyer



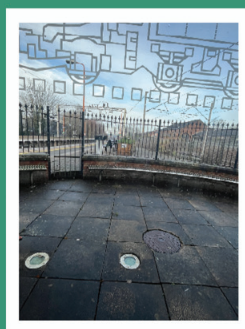
Railway Station Building



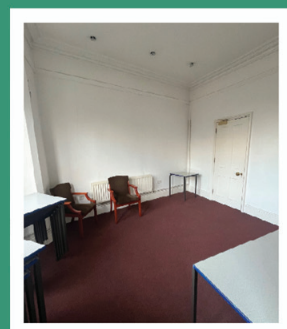
Function Room



Kitchen



Courtyard



Breakout Area

2 larger rooms and smaller
breakout rooms
Exclusive use of full venue
Suitable for parties,
meetings, playgroups, etc
Competitive rates

Small outdoor fenced
courtyard
Kitchen and toilet facilities
(incl. disabled toilets)
Tables and chairs available
Free Wi-Fi



For more information -
Call 01785 619740
Email bookings@stonetowncouncil.gov.uk
Scan the QR code



Stone Heritage Centre Newcastle Street, Stone, ST15 8JX



Housed in the old fire station building, the Heritage Centre is a dedicated space to showcase Stone's history, hold guest speaker lectures and present Stone-related exhibitions.

Opening Hours
Thursday - Saturday, 11 am - 4 pm



For more information -
Call 01785 594767
Email heritagecentre@stonetowncouncil.gov.uk
Scan the QR code



ST15

Family Life





For 25 years, families across Stone have trusted AMG Nursing & Care Services to provide compassionate, professional care that allows people to remain independent in the comfort of their own homes.

From everyday support and companionship to complex nursing care, our experienced team tailors services to meet individual needs, offering dignity, reassurance, and peace of mind.

As specialists in domiciliary and clinical care, we're proud to deliver reliable, high-quality support that truly makes a difference in people's lives.

This year, we celebrate 25 years of caring for our community—and we're not done yet. With a dedicated team by your side, you can trust AMG to be there when it matters most.

We're also proud sponsors of the Stone Carnival—don't miss our float on 7th June as we celebrate this milestone with you!



Join our team!

We're always looking for passionate, caring individuals to join AMG Nursing & Care Services.

- ✓ Flexible hours
- ✓ Competitive pay
- ✓ Paid training
- ✓ £250 joining bonus
- ✓ Up to £275 per friend referral

Start your career in care today!
Visit www.amgnursing.com

Complex Care Services

- ▶ Brain Injury
- ▶ Spinal Injury
- ▶ Degenerative and Neurological conditions
- ▶ Respiratory and Airway support
- ▶ Learning Disabilities

Adult Services

- ▶ Palliative Care
- ▶ Live in Care
- ▶ Night Care
- ▶ Companionship and Respite Care
- ▶ Shopping Call

Specialist Children's Care

- ▶ Learning Disabilities
- ▶ Cerebral Palsy
- ▶ Autism
- ▶ Brain Injury
- ▶ Spinal Injury
- ▶ Respite Care

Book a FREE Care Assessment



01785 899400

www.amgnursing.com

WEIGHT LOSS SERVICE AVAILABLE

YOUR JOURNEY, OUR SUPPORT

Birchill & Watson, Walton Pharmacy, 46 Eccleshall Rd, Walton, ST15 0HN - 01785 812059

Birchill & Watson, High St Pharmacy, 16 High St, Stone, ST15 8AW - 01785 812597



**Clinically proven
medications available**

*Subject to a clinical consultation with a healthcare professional

BYCERYS

manicurist

BUILDER GEL
GEL EXTENSIONS
GEL NAILS



MORE INFO



07879 037346 ceznailss@gmail.com

StudioRAE, Dunston Business Village,
Log Cabin 11b, Dunston, Stafford, ST18 9FJ

BUILD CONFIDENCE AND EMPOWER PROGRESS

EXAM TUITION

Conexus
Tuition
Stafford
Stone

SATs
English and
Maths

GCSE
English, Maths
and Science

Year 1 to
GCSE
Core Subjects

Qualified
Teachers

Watson Community Centre
Stone
ST15 0EQ

BOOK A
FREE
TRIAL

Timetable info

STAFFORD & STONE

07826968703

• Walton Community Centre, Stone, ST15 0EQ
• St John's Church Hall, Stafford, ST16 3RP
• Berkewich Methodist Church, Stafford, ST17 0LH
• Online now available

Scan me

YOUR AD COULD GO HERE

Call The Stone Gazette
on 07514 967 890 or email
stonegazette@outlook.com

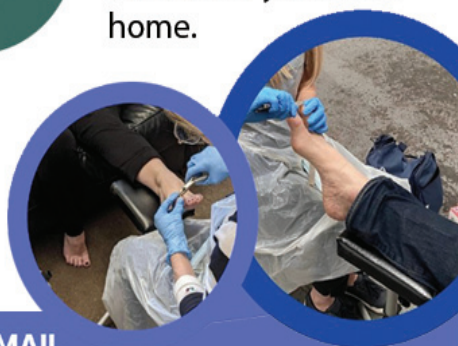
LOUISE CURLEY MCFHP MAFHP FOOT HEALTH PRACTITIONER



- Nail Cutting
- Corns
- Callous
- Cracked Heals
- Thickened Nails
- Ingrown Nails
- Athletes Foot
- Diabetic Foot Care

£35
per visit

Providing high quality professional foot care and treatment in the comfort of your own home.



CONTACT ME
07791 522299



EMAIL
louisefoothealth@icloud.com

ISOBEL WHITTAKER

INDEPENDENT FUNERAL SERVICES



STONE'S ONLY INDEPENDENT FUNERAL DIRECTOR

Our Services

- 24 Hour Personal Service
- Private Chapel of Rest
- Funeral Plans
- Traditional and Alternative Options
- Direct Cremation from £1200
- Fully Inclusive Packages



What our families say

"Her kindness especially at my time in need makes Isobel so very special to me. Isobel truly is a hero in my life."

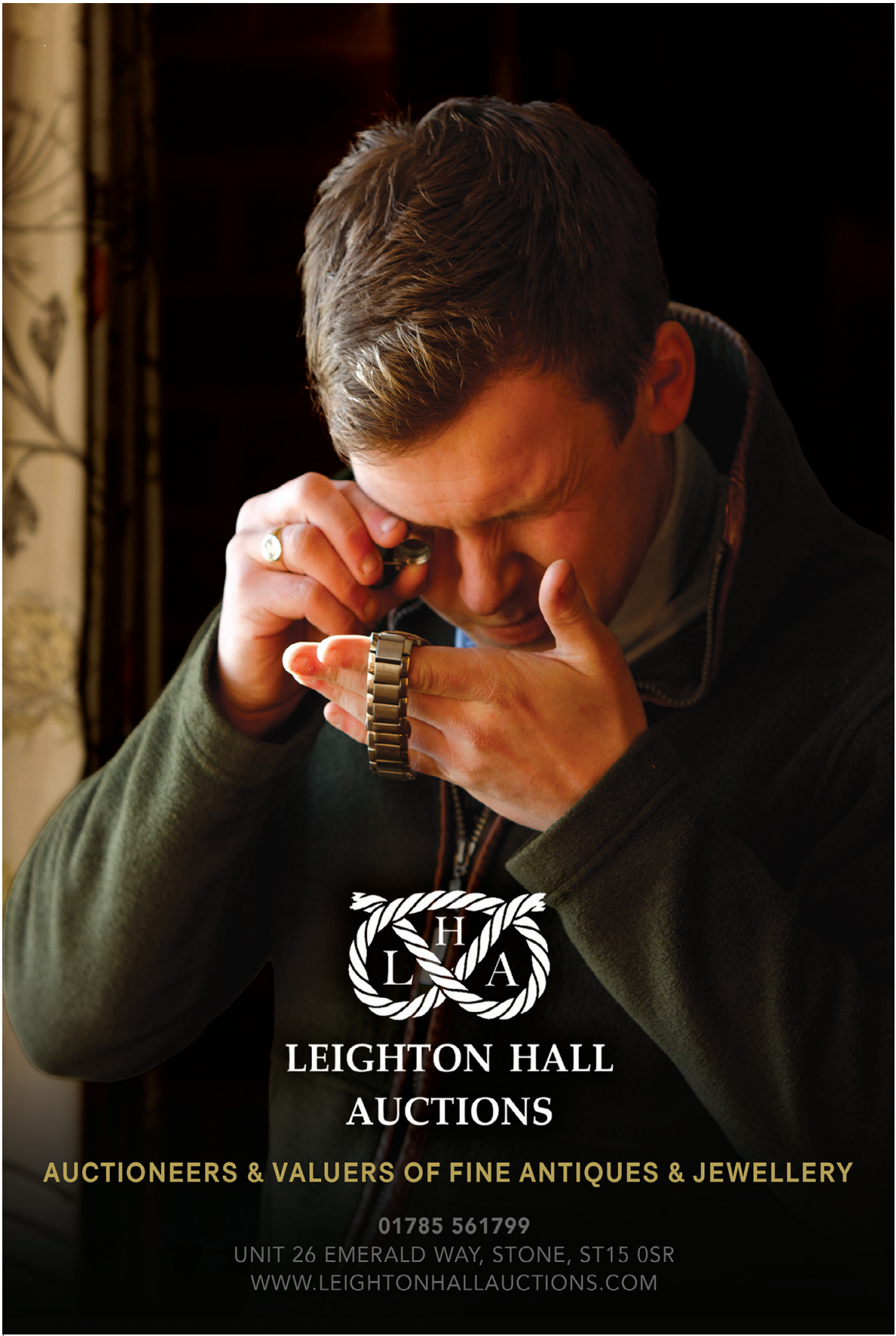
"The care that we as a family received from Izzy over this really awful period was wonderful. My beautiful Mum's funeral was flawless."

"Izzy, was truly amazing. She was extremely helpful throughout the entire process and went above and beyond to ensure that everything went smoothly and ours wishes honoured."

01785 336 722

60 Pirehill Lane, Walton, Stone, ST15 0JN
www.iwfuneral.co.uk





**LEIGHTON HALL
AUCTIONS**

AUCTIONEERS & VALUERS OF FINE ANTIQUES & JEWELLERY

01785 561799

UNIT 26 EMERALD WAY, STONE, ST15 0SR

WWW.LEIGHTONHALLAUCTIONS.COM

Salon 36



Introducing Mani's by Dani @ Salon 36 Beauty Room

Services Include: Biab Nail treatments / Manicures / Pedicures / Nail Cutting / Skin Care / Extensions with Biab
Late evening appointments available

Prices & Appointments by text or voicemail only please
On 07526 804 250 Dani Direct & Follow on Instagram

WALTON PRECINCT, STONE ST15 0HN
CALL 01785 813294 | TEXT 07917 824625
Open Tuesday 9-3 Wednesday 8.30-5
Thursday 9-7 Friday 8.30-5 and Saturdays 8-2pm



WE DON'T USE MACHINES. WE BUILD THEM



SWC FITNESS

WHAT WE OFFER:

- HIIT CLASSES
- STRENGTH AND STAMINA
- 1-2-1 SESSIONS
- NUTRITIONAL GUIDANCE
- A SAFE AND FRIENDLY ENVIRONMENT TO WORK OUT

JOIN NOW!

CONTACT US:

07807006239

www.swcfitness.co.uk

FIRST CLASS FREE WHEN YOU BRING THIS FLYER



SHELMORE

TIMBER & SAWMILL

FREE LOCAL DELIVERY



Premium quality
seasoned
hardwood logs,
delivered straight
to your door.



www.shelmoretimber.co.uk • Call 01785 284 718 or email sales@shelmoretimber.co.uk



ST DOMINIC'S
PRIORY SCHOOL
STONE

WHEN A CHILD FEELS KNOWN, THEY THRIVE

Take a fresh
look at



St Dominic's
Priory

Independent education for children aged 3-16

www.stdominicspriory.co.uk

Tittensor C.E. (VC) First School

Learning and growing together as we follow Christ



Tittensor First School is a small, friendly first school with a caring, Christian ethos.

Our staff deliver a creative and challenging curriculum in a nurturing and fun environment.

We believe in educating the whole child and prepare our children for the ever-changing world we live in.

Nursery places available for September!



CONTACT US



✉ office@tittensor.staffs.sch.uk

☎ 01782 372539

🌐 www.tittensor.staffs.sch.uk

Ofsted 2023- Good with Outstanding features:

"Pupils are well cared for at Tittensor CE First School. They are met with smiles and warm greetings by staff and leaders every day. "Pupils are taught how to show acts of kindness. Staff and pupils are kind to each other as a result".

Tittensor First School
Beechcliff Lane,
Tittensor
Stoke-on-Trent,
ST12 9HP



THE RURAL ENTERPRISE ACADEMY

“Educating, nurturing and inspiring our future rural entrepreneurs.

Creating a culture that is kind, where everybody can be successful.”



- Distinctive secondary school that blends traditional academic learning with a strong emphasis on rural enterprise.
- Offers students a unique educational experience in a countryside setting.
- Connecting classroom learning with real-world rural industries, focusing on sustainability and environmental stewardship.



enquiries@ruralenterpriseacademy.com | 01785 333360



www.facebook.com/RuralEnterpriseAcademy

Walton Butchers

Hot Food, Sandwiches, Deli

Walton Butchers' Quality Meat Is Always Available Next Door

Londis Open 7 Days

Lots Of Local Products Available In Both Walton Stores & Walton Butchers

LOCAL STAFFORDSHIRE BEEF

PACKINGTON HOME CURED GAMMON & BACON

BBQ

GRAIN FED CHICKENS

LOCAL SPRING LAMB

SIN FREE SAUSAGES
Low Fat Sausages
Made from Free Range Pork

PACKINGTON FREE RANGE PORK

WITH A HUGE RANGE OF KEBABS, BURGERS, SAUSAGES, RIBS, SEASONED & FLAVOURED BEEF, CHICKEN, LAMB
- ALL READY FOR THE BBQ!
EVERYTHING IS PREPARED FRESH IN STORE
GREAT OFFERS THROUGHOUT THE SUMMER

Phone Orders Welcome

Great every day prices for top quality meat with our weekly meat pack deals

01785 818837 5 Eccleshall Road, Walton, Stone, ST15 0HJ

ST15

Home & Garden



Win **£20,000 CASH** when you replace your glass!

We're celebrating 20 years of excellence – and you could win **£20,000** in our Anniversary competition! To enter, simply spend **£500 or more** with us between now and the end of August 2026.

For over 20 years, Cloudy2Clear, a trusted family-run business, has been the UK's leading domestic glass replacement specialists, serving as your One-Stop Shop for all your glazing requirements – and now we're marking this milestone with an exciting competition where one lucky customer will win £20,000! We take pride in generating our own leads, crafting tailored quotes, and manufacturing our own glass using only the highest-quality materials to ensure exceptional results. Unlike competitors, we never use subcontractors – our team consists entirely of skilled, in-house professionals, guaranteeing consistent quality and reliability. Every glass unit we fit comes with a 25-year guarantee, complemented by comprehensive after-sales care, providing you with lasting peace of mind.

Why opt for costly full window frame replacements that lead to unnecessary redecoration expenses? By replacing

only the failed glass unit, we save you money and minimise disruption – perfect for qualifying for our £20,000 prize draw while upgrading your home. Join over 344,000 satisfied customers who trust our ethical, affordable service. Failed double glazing can compromise your home's protection and energy efficiency, so check your windows today to avoid future costs.

Since 2005, Cloudy2Clear has been committed to saving customers money while supporting local communities. Manager Anthony Wagstaff explains, "Our focus is on replacing just the glass, not the entire window, which reduces costs and upheaval. As a One-Stop Shop, we manage everything – from lead generation to crafting premium glass with a 25-year guarantee and dedicated after-sales support – making us the smart, cost-effective choice in any economy."

For a free quote (and your chance to enter the competition), call 0800 61 21 118 or visit www.cloudy2clear.co.uk today!

(Prize draw 28/8/2026 - T's&C's apply. Visit www.cloudy2clear.co.uk for more information)

“
Ask me about our fantastic Energy Saving Glass.
”



Have Your Windows Steamed Up?

Replace the pane, not the frame!

All glazing backed by our

**25
YEAR
GUARANTEE**

“I really liked the fact that they were a local community-run business”

Janet Beard



We are a Checkatrade Member



Get a FREE Quote

Your trusted local expert

Faulty locks, handles or hinges?



Glass, it's better when it's clear!

Priority freephone
0800 61 21 118

www.cloudy2clear.co.uk

Glass, it's better when it's clear!



www.st15directory.com

THE DOOR COMPANY

SUPPLIERS & INSTALLERS OF COMPOSITE, UPVC, PATIO & INTERNAL DOORS



We are Stafford's leading suppliers & installers of Solidor, Endurance & Rockdoor solid timber core composite doors. We have over 25 composite doors on display at our beautiful showroom!



The Door Company has a range of internal doors to choose from, along with a great choice of hardware.

We supply & install interior doors. We offer same day quotes & a full measuring service

Design your dream door

WWW.STAFFORDDOORCOMPANY.CO.UK TEL: 01785 211517
SHOWROOM: 8 WOLVERHAMPTON ROAD, STAFFORD, ST17 4BN

ENDURANCE
Solid & Secure Composite Doors

PREMIUM
INSTALLER
Solidor

XL
Joinery

Solidor
INSTALLER
OF THE
MONTH

lpd
DOORS

**ROCK
DOOR**

EAGO

PERFECT HOME SOLUTIONS



Quality, Affordable Bathrooms, Kitchens, Bedrooms & Tiles
Combining Style and Innovation

Our Perfect Solutions are exclusively designed for you



Looking to upgrade your Bathroom, Kitchen or Bedroom?

Then visit the one stop shop for all your home solution needs.

Our **Brand New Showroom**, which is mobility friendly, is the biggest for miles, with **Over 60 Bathrooms and Cloakrooms, 10 Kitchens and 10 Bedrooms On Display!** Many are live displays, so you can really get a feel of the quality that's on offer.

Our **Tile Outlet** gives you hundreds of choices - with all the very latest fashions - or maybe you're looking for a more traditional look? There's **100's of designs IN STOCK to TAKE AWAY** the same day.

We offer a free design and consultation service, with evening and daytime appointments available.



Open 8am - 4pm Monday to Friday, 9am - 4pm on Saturdays, 11am - 3pm Sundays at
Eago Perfect Home Solutions Greyfriars Way, Stafford ST16 2RF
Call us today on 01785 244447 or come and take a look around

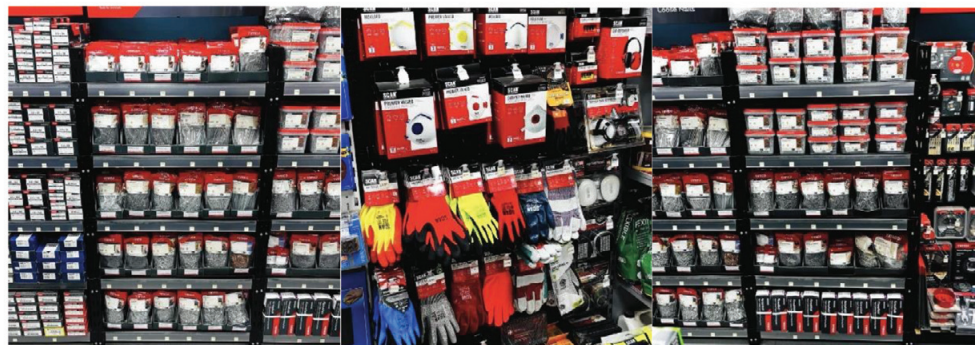
Build With Confidence. Build With Stone Builders Merchants

Looking for premium building supplies delivered with unbeatable service? At Stone Builders Merchants, we are your trusted local partner for projects of every size, from small home improvements to larger construction projects



Why Choose Stone Builders Merchants?

- **Top-Quality Materials:** Bricks, blocks, timber, aggregates, landscaping, and more — all sourced for durability and performance.
- **Expert Advice:** Our knowledgeable team helps you choose the right products for your project.
- **Competitive Prices:** Get the quality you need without breaking the budget.
- **Fast, Reliable Delivery:** Right to your site, right when you need it.
- **Trade & Public Welcome:** Whether you're a pro or a DIY enthusiast, we've got you covered.



Transform your project with materials you can trust.

Stone Builders Merchants — Building Better, Together.

34 Whitebridge Estate, Stone, ST158LQ Telephone 01785 816009

www.stonebuildersmerchants.co.uk



A family business

you can trust



STONE SHOWROOM
A34 THE FILLEYBROOKS
ST 15 0DJ
OPEN 7 DAYS

 **01785 811558**

UTTOXETER SHOWROOM
1 SMITHFIELD ROAD
ST14 7LG
CLOSED SUNDAYS

 **01889 566388**

Bespoke kitchens & Furniture



EST 1975
Handmade by Tylman's

Bespoke kitchens
Bespoke furniture

Designer kitchens
Kitchen Stori retailer

Kitchen refurbishments
Worktop replacements

Bedrooms
Free kitchen design

Free quote and design
Granite & Quartz worktops
Bespoke Bathrooms

Media walls
Replacement kitchen doors

Workshop and Showroom
Tylman of Leek Ltd. Unit 8 Emerald Way,
Stone Business Park, Stone ST15 0SR

www.tylmanofleek.co.uk
Call Phil on 07809 448519

ST15

Home Services





AKB ELECTRICAL

COVERING STAFFORD,
STONE, AND SURROUNDS

**YOUR LOCAL, RELIABLE
ELECTRICIAN**

25 YEARS EXPERIENCE
DOMESTIC & COMMERCIAL

CALL MICK ON
07351 651 385

ASLK Plumbing & Handyman Services of Yarnfield



Specialists in
Plumbing Repairs and Bathrooms
Also Tiling, Flooring, General Maintenance

t: 01785 760403 m: 07971 077283
www.stoneplumber.co.uk askplumbing@gmail.com



DEB'S HOMECARE

professional home cleaning & ironing

Commercial & Domestic
One Off Cleans
Weekly / Fortnightly Cleans
Competitive Prices
Cleaning Materials Supplied
Fully Insured - Free Quotes

**WE CAN
EVEN DO YOUR
SHOPPING**

ESTABLISHED
2007

Call 07990 810 351
or 07841 636 062

Boulton's SKIPIRE

Covering All Of Staffordshire

**2 & 3 Tonne Mini Skips • 4 & 6 Tonne Midi Skips
8, 10 & 14 Tonne Large Skips,
Drop Doors For Easy Loading**

www.boultonsskiphire.co.uk

01785 330310 / 07971 566383

Moorfields Industrial Estate, Cotes Heath, Eccleshall



WE CLEAR EVERYTHING!

CRYSTAL HOUSE CLEARANCES

Take the stress out of clearing your home with the help of Crystal House Clearances. Whether you need to clear your house before you put it on the market, or are dealing with the deceased estate of a loved one, our professional and friendly service can help you through this process.



- ✓ Eco-Friendly Disposal
- ✓ Fast and Efficient Service
- ✓ Affordable Rates
- ✓ Safe and Hassle-Free

Call today for your free quote!

CONTACT US



07375420037 / 07939576342



www.crystalhouseclearances.com

DECKING

DECKING • SEATING • LIGHTING • PLANTERS
PROFESSIONAL DECKSMITHS



A

ALAN BENNETT
 Landscapes & Maintenance



Patios - Driveways - Fencing/Gates - Decking
 Drainage - Digger/Operator Hire - Retaining

T: 01785 213522 M: 07813 892408

www.stafford-decking.co.uk

www.alanbennettlandscapes.co.uk



GREENHILL ROOFING

Slating & Tiling Since 1985

NEW ROOFS and REPAIRS

- Tiled and Flat Roofs
- Leadwork, Chimneys
 - Guttering
- Mortar Pointing
- Roof Windows
- Sky Tunnels

*“The name to trust with all
 your roof requirements!”*

Tel: 01785 286818 / 07863 340996



www.greenhillroofing.com





Covering Stone, Eccleshall, Stafford, Gnosall and the surrounding villages.

- Tree Services
- Hedge Cutting
- Grass Cutting
- Garden Services

Fully-qualified and insured, EG Trees Garden Services can take on your garden project from tree felling to hedge clipping, pruning to waste removal.

Professional Tree & Hedge Services

www.egtrees.co.uk

T: 07796 004163 or 01785 665586

OIL BOILER SPECIALISTS

01782 542632

07811 427423

- All makes of oil boilers, serviced, repaired and installed
- Fully qualified and Oftec registered engineer
- Installation of oil tanks and upgrades

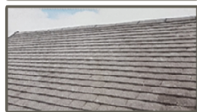
ALL AREAS COVERED

goldstraws
WWW.GOLDSTRAWS.CO.UK



ALL ASPECTS OF PITCHED ROOFING UNDERTAKEN INCLUDING

- COMPLETE RE-ROOFS
- CHIMNEY AND LEAD WORK
- SOFFIT/FASCIA REPLACEMENT
- GUTTERING REPLACEMENT
- SKYLIGHT INSTALLATION
- ROOF REPAIRS AND CLEANING



CALL MARK EVANS ON 07949 856 283

EMAIL: egroofingsolutions@hotmail.com



KEEP IT LOCAL
...STONE BASED

- Free quotation
- New roofs and repairs
- Over 10 years experience
- Public liability insured

CALL DAN THORLEY

07837 212873



- New roofs and repairs
- Lead work
- Guttering
- Fascia
- Soffit
- Chimneys
- Flat roofs
- Roof windows
- Sky tunnels
- Dry verge systems
- Bird deterrent
- Roof & gutter clean
- Solar panel cleaning
- Flat roof conversions

Johnson's Plumbing Services

The Complete Domestic and Commercial Plumbing Service

- 24/7 Call outs
- Bathroom and Kitchen Installations
- Mobility and Special Care Alterations
- Shower Specialist
- All Aspects of Tiling
- Karndean Flooring
- Minor Building/Maintenance Work
- Part P Electrical Work
- All Work Insured & Guaranteed



**Professional
Reliable
Free Quotes**



Tel: 01785 241628 Mobile: 07803 703510

Lynacres, 15 Whitgreave Lane, Great Bridgeford, Stafford, ST18 9SJ

E-mail: johnsonsplumbing@btconnect.com



M L Wenlock Ltd
Landscaping and Groundworks Services

EXPERIENCED LAND MAINTENANCE SPECIALISTS

- Hedge Cutting
- Agricultural Services
 Private and Commercial
- Paddock Maintenance,
 Topping, Harrowing & Rolling
 - Baling and Wrapping
- Spraying & Weed Wiping
 - Chipper Services
- Tractor & Digger Work
 Including Drainage
- Garden & Ground Maintenance
- Decking • Turfing • Fencing
 - Landscaping
- Shed Assembly & Shed Bases
 - Patios • Garden Features
 - Raised Borders
 - Garden Clearance
 - Groundworks
 - Excavator Services
- Stem Injection Treatment
 for Japanese Knotweed



FREE NO
 OBLIGATION
 QUOTES

FAMILY RUN
 COMPANY
 Over 20 years'
 experience

NO JOB
 TOO BIG OR
 TOO SMALL

**LOCATED IN
 SWYNNERTON**



**FOLLOW US ON
 facebook**

Mob: 07969 507573

Tel: 01782 796488

E: markwenlockltd@gmail.com

www.markwenlockltd.co.uk

We Care About the Details • Customer Satisfaction Guaranteed



Kays Upholstery & Leather Repair

Antique & Modern Furniture
Recliners Electric & Manual Repairs
Springs Replaced
Foam Feather Fibre Inners Supplied
Cabinet & Frame Repairs - Pet Damage
Leather Re-colouring



Call 01785 851470 or 07765 419367
www.kaysupholstery.co.uk
39a High St, Eccleshall, ST21 6BW

TIME TO CLEAN YOUR OVEN?

AS SEEN
ON TV

LET US DO THE JOB YOU HATE



- Ovens
- Grills
- Extractors
- Filters
- BBQs
- Microwaves
- Hobs
- Ranges
- AGAs

"I'm delighted at how sparkly clean my oven and hob look now! The cooker looks brand new again"

Call Martin or go online today
for your **FREE QUOTE**

  07932 195752 
ovenclean.com — LESS GRIME. MORE TIME —



MALPASS

PEST SOLUTIONS



COVERING ALL RESIDENTIAL AND COMMERCIAL PREMISES
24HR SERVICE / FULLY INSURED / FAST & RELIABLE
CALL TODAY FOR A FREE SURVEY!



Pat Malpass
Senior Technician
07496 944 410



info@malpasspestsolutions.co.uk
www.malpasspestsolutions.co.uk

BASED AT WHITEBRIDGE ESTATE, STONE



All models of oven, hob, extractors
& microwaves cleaned to perfection

Range & Aga Specialists
Unique valeting process using
oven developed caustic
free products

**CALL US FOR A FREE
QUOTE/BROCHURE**

WE COVER THE STONE & STOKE AREAS

07774 215779
www.oven.co.uk

**PC PLUMB
PLUMBING & ELECTRICAL**

Consumer Units, Safety Inspections
Electric Vehicle Charger Installations

RELIABLE, LOCAL SERVICE

General Plumbing, Taps, Radiators,
Bathroom Installs, Heating controls



Contact: paul@pcplumb.co.uk
Mobile **07969 978 503**
Stone **01785 760 783**

www.pcplumbelec.co.uk
www.facebook.com/pcplumbelec

Online enquiries & bookings available
Credit and debit cards accepted

*The
Painting and Decorating
Company*

Stone Based

Over 40 Years Experience

Time Served Tradesman

Call Richard on 07837 572285



Made to measure
**KITCHENS
 &
 BEDROOMS**

*Over 40 years
 experience
 All price ranges
 catered for*



Contact Kev Regan
Stone 01785 615346
Mobile 07954 589164

W: www.room2roominteriors.co.uk
 E: room2roominteriors@live.co.uk

**GRASS CUTTING
 SERVICE**

**STONE BASED
 LOCAL AND RELIABLE**

**CALL MICHAEL
 07870 249220**



SL SERVICING

LAWNMOWER SALES & SERVICING

Lawnmower & Garden Machinery Servicing & Repair Centre

**Finished with your Lawnmower
 for the Winter?**

Get it serviced now to avoid
 the Springtime rush!



Collection & Delivery
 Service Available
 For Ride On
 Lawnmowers

STONE BASED
 Contact us at SL Servicing
01785 815585

AUTHORISED MOUNTFIELD & STIGA DEALERS

Unit 8E, Whitebridge Industrial Estate, Whitebridge Lane, Stone, ST15 8LQ



SUPERB CLEANING

- CARPETS
- UPHOLSTERY
- LEATHER
- RUGS
- CURTAINS
- MATTRESSES
- STAIN REMOVAL & PROTECTION
- STONE
- TILE & GROUT
- WOOD
- DRIVEWAYS
- PATIOS
- DECKING



*Tim Shaw recommended & used by leading home
 furnishing retailers since 1997.*

www.shawclean.co.uk

Staffordshire & Shropshire Areas

07976 559 072 0800 612 8817

ST15

*Professional Services
& Property*





AUSTIN & ROE

INDEPENDENT ESTATE AGENTS

BASED AT GRANVILLE SQUARE IN STONE

Austin & Roe is a family run business with properties available over the Stone and Eccleshall area.

We specialise in:

- Sales – Valuations
- Lettings – Hassle Free/Regulations Support
- Property Management
- In-House Mortgage Advisor

We look forward to discussing your property requirements.



MORTGAGE ADVISER



QUALIFIED ENERGY PERFORMANCE ASSESSOR



DETAILED FLOORPLANS



VIRTUAL REALITY PROPERTY TOURS



PREMIUM HIGH STREET OFFICE

Granville Square 75A High Street
STONE ST15 8AE
Tel:01785 338 570

sales@austinandroe.co.uk
lettings@austinandroe.co.uk
www.austinandroe.co.uk



TURN YOUR DREAMS IN TO REALITY

Plans for all Extensions, Conversions and Alterations - Let us help you create your dream home

Replace your tired conservatory with a new sunroom, and get away from that 'too hot in summer and too cold in winter' scenario.



BEFORE

AFTER



30
YEARS IN BUSINESS!

Free advice and quotations | Inspirational ideas | Fixed fees | Free on site consultation
All dealings with the Local Authority | Recommend and liaise with builders
10% Discount for Senior Citizens and Blue Light Card holders



Architectural Design Specialists

Inspirational designs with a fast, friendly, professional service
01782 622321 enquiries@jpkdesign.co.uk www.jpkdesign.co.uk



Advertising with us could make a real difference to your business in 2026

THE STONE & ECCLESHALL Gazette

The Stone & Eccleshall Gazette is hand delivered bi-monthly to 13,400 homes in Stone, Eccleshall and the surrounding areas.

The Gazette and My Village Voice are both 'editorially led', and it's local editorial content that is at the heart of what we do. An abundance of quality, local editorial is the reason readers will keep a free magazine.

Some of our advertisers have been with us for over the 20 years we have been publishing, and on any given month, up to 80% were in the previous edition.



My VILLAGE VOICE

My Village Voice is our sister publication, it has the same ethos as The Gazette, in terms of strong local editorial content, but is delivered to homes and businesses within villages to the south of Stafford.

5,400 copies are hand delivered bi-monthly to Acton Trussell, Bednall, Bradley, Brocton, Church Eaton, Colwich, Coppenhall, Dunston, Derrington, Haughton, Marston, Milford, Seighford, Great Haywood, Little Haywood and Walton on the Hill.

THE ST15 DIRECTORY

The ST15 Directory is an annual directory, produced by The Stone & Eccleshall Gazette.

10,000 copies are delivered each year in late January, to homes and businesses within the ST15 postcode area. B5 in size it has a strong laminated cover, making it perfect to keep all year round.

BOOK NOW FOR THE 2027 EDITION



Call us on 07514 967 890 or email: stonegazette@outlook.com

www.stonegazette.com www.myvillagevoice.co.uk www.st15directory.co.uk



- Sole Traders
- Partnerships
- Limited Companies
- Audits
- VAT & Bookkeeping
- Business start ups
- Self assessments
- Personal tax service
- Payroll bureau
- SAGE Business Partner

We pride ourselves on being friendly & our qualified and experienced staff have experience in dealing with a variety of business consultancy issues.

01785 814 864

www.plantandcoaccountants.co.uk

PETER J PLANT F.C.A Senior Statutory Auditor



**Whitebridge
ESTATES**

*Join the Business Park
with a Village feel*



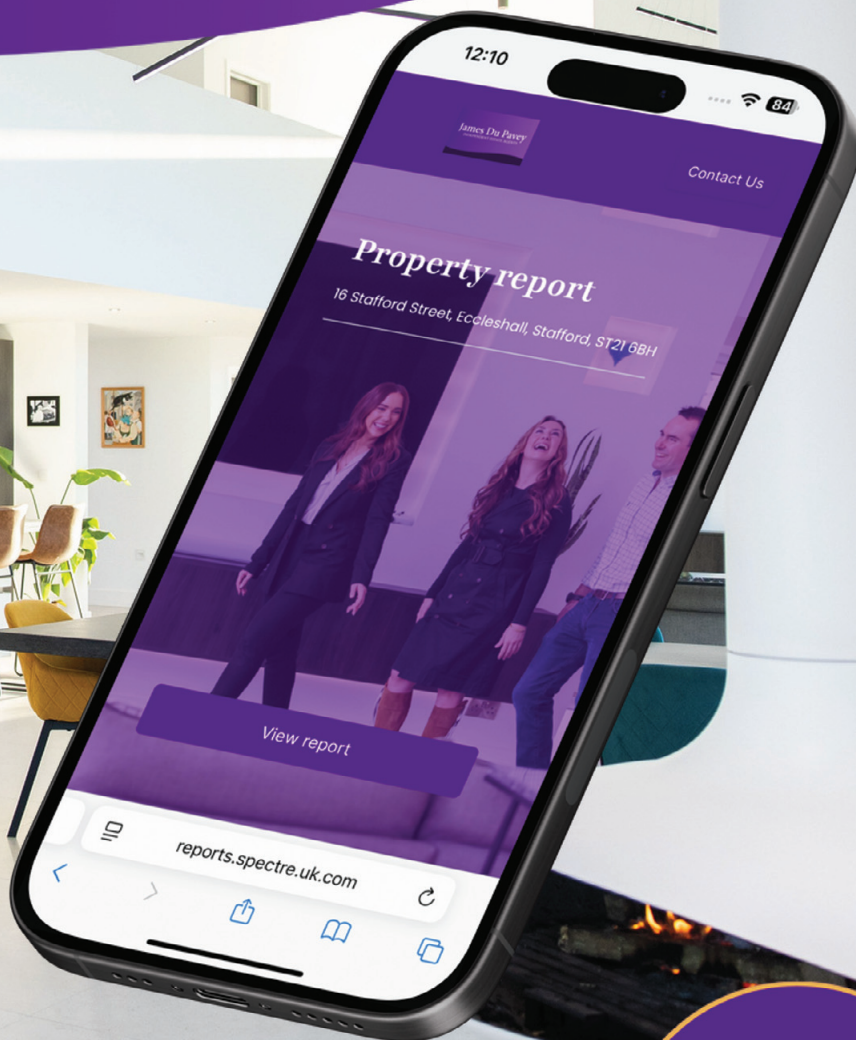
- Located just 100 metres from the A34 midway between junctions 14 and 15 of the M6
- *Perfect for logistics*
- Warehousing, commercial and office space to rent with flexible accommodation
- Manufacturing facilities with ability to adapt • File storage and retrieval facilities available
- Safe, secure and easily accessible • Peace of mind with 24 hour on site security and CCTV
 - On site facilities including café, children's nursery and large free car parks

The owners and their management, maintenance and security teams are on site daily to ensure the estate runs smoothly and securely

Whitebridge Estates - Whitebridge Lane, Stone, Staffordshire. ST15 8LQ
Tel: 01785 817170 www.whitebridge.co.uk

Discover your home's story

Scan for expert insights in seconds



James Du Pavey

INDEPENDENT ESTATE AGENTS

MULTI AWARD WINNING AGENT